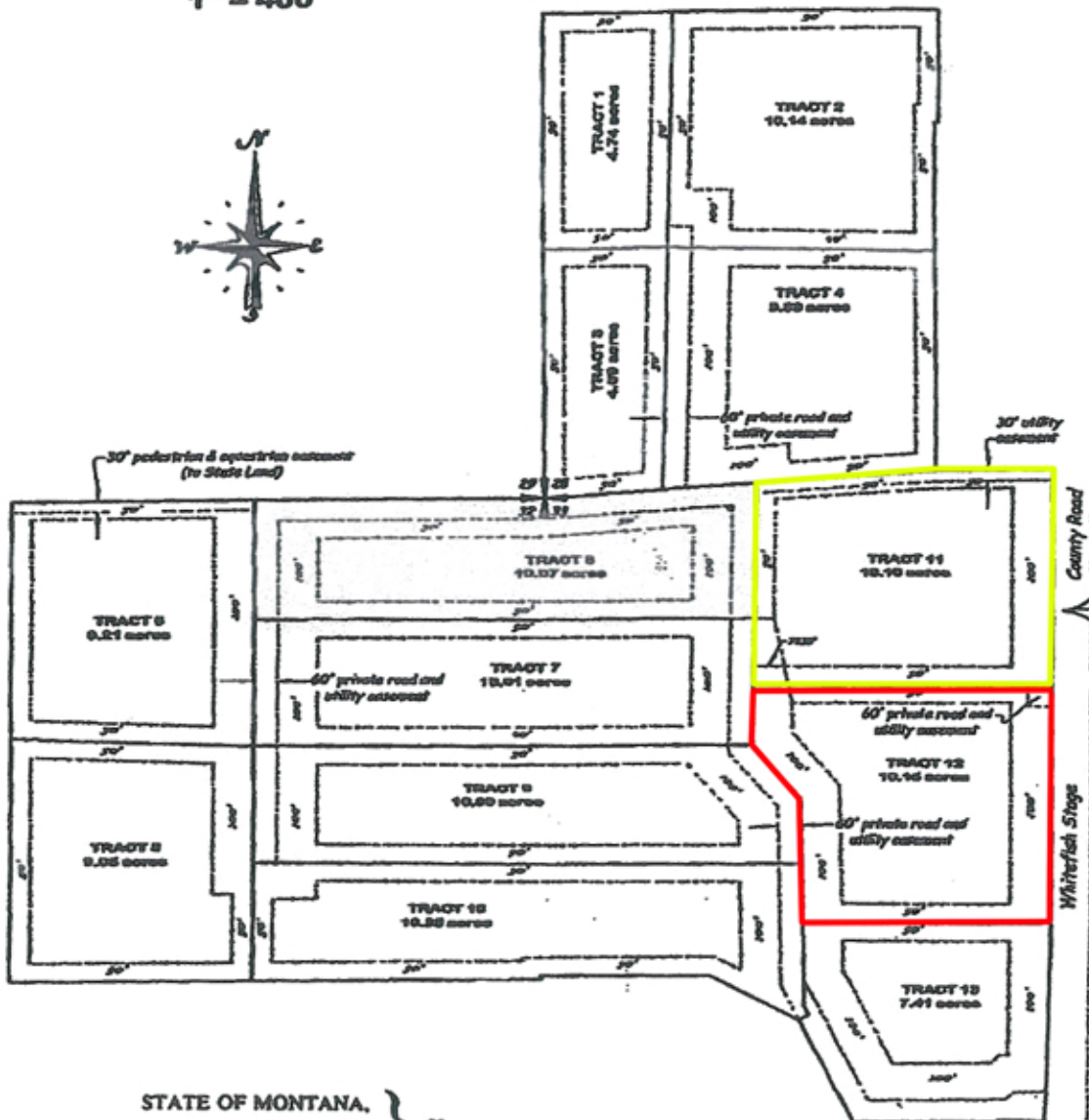


2001291 |||110

EXHIBIT "B"
PROPERTY SETBACKS
1" = 400'



STATE OF MONTANA, }
 County of Flathead } SS

Revised Date: September 7, 2001

Recorded at the request of CTE
 this 18 day of Oct, 2001 at 11:11 o'clock AM and recorded in
 the records of Flathead County, State of Montana.

Fee \$ 84 Pd.

RECEPTION NO. 2001291 |||110

RETURN TO _____

Susan J. Haverfield
 (Flathead County Clerk and Recorder)

Chris Terry
 (Deputy)